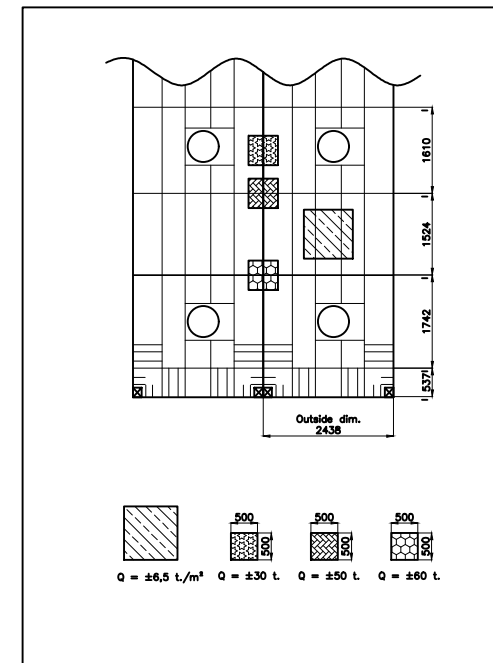
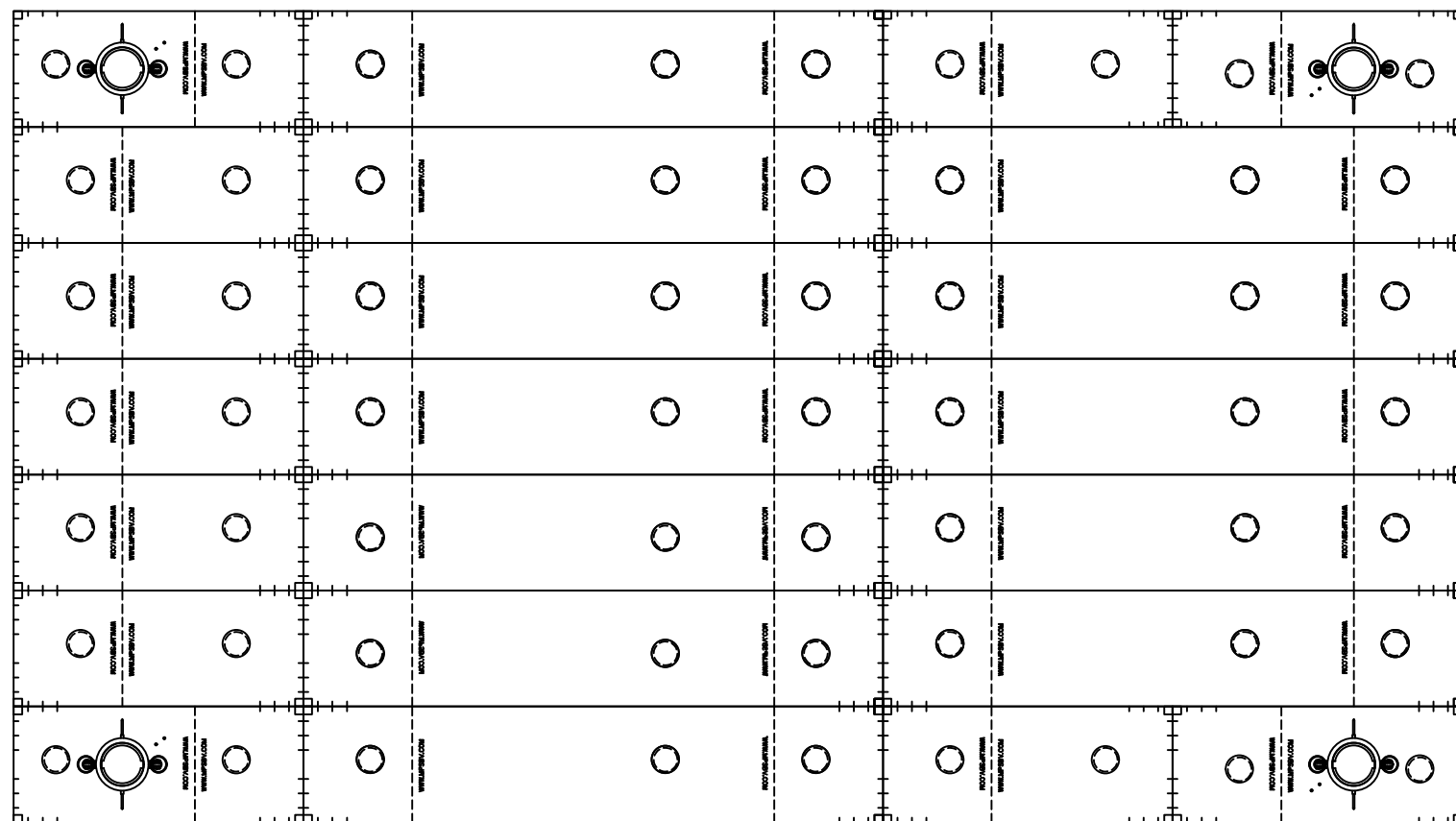
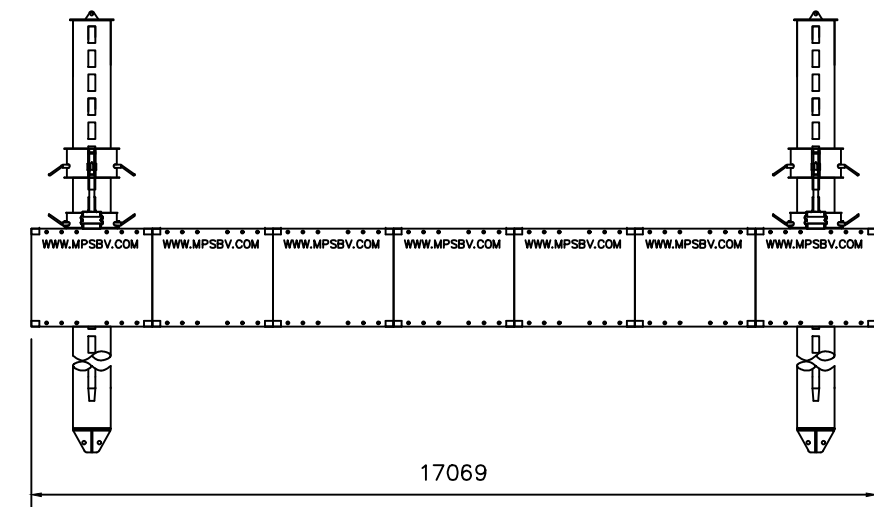
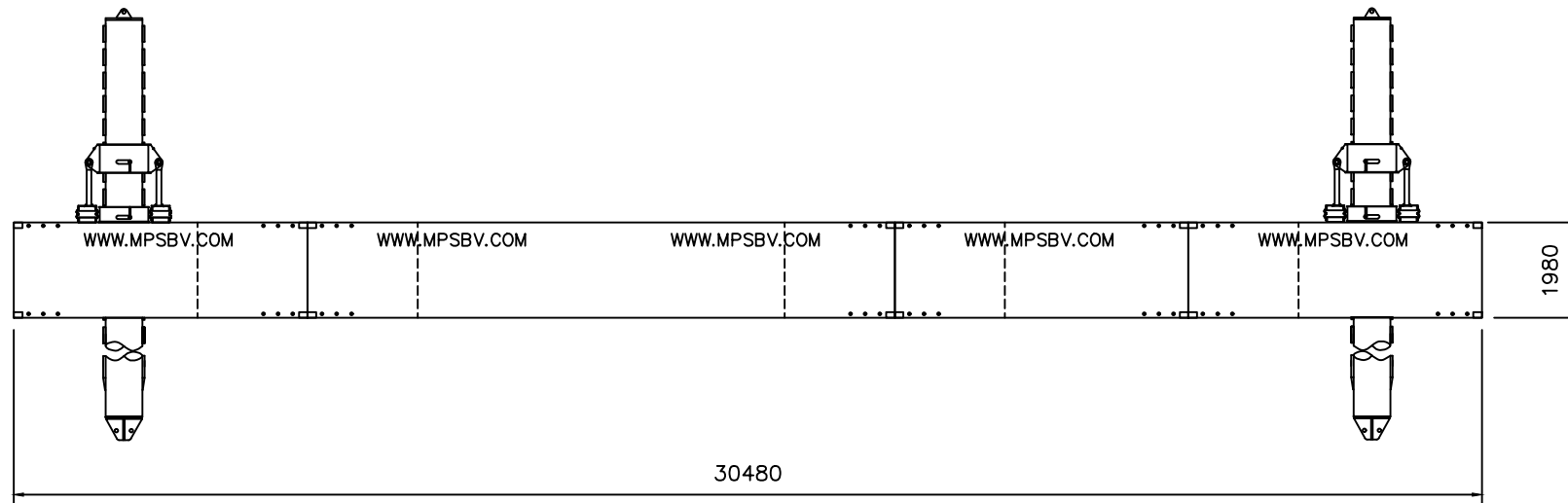


REV:	DATE:	DRWN:	CHKD:	APPRVD:	REMARK:



Assembly consists:
 MPS container type 20' : 7 pcs
 MPS container type 20'SP : 4 pcs
 MPS container type 40' : 12 pcs

MPS MODULAR PONTOON SYSTEMS BV
 Veerdam 1, 5308 JH, Aalst (Gld) Holland
 Tel: +31(0)418-678086, Email: info@mpsbv.com

NAME: dim. 30.48 x 17.07 x 1.98m
 Projection: Sheet: 1 of 1

SCALE:	DATE: 01-08-2019	DRAW.NR.:	Rev.:
CHECKED BY:	ORDER NO.:		
DRAWN BY: TTH	DRAW.FORMAT	COPYRIGHT RESERVED ACC. LAW.	