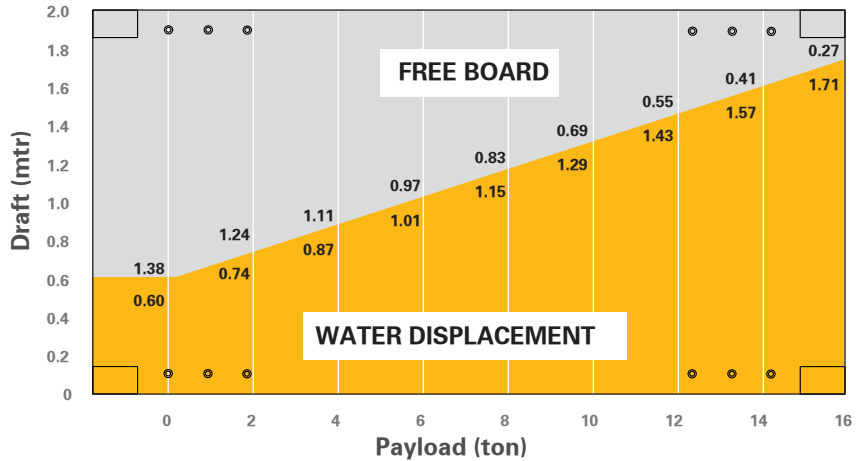


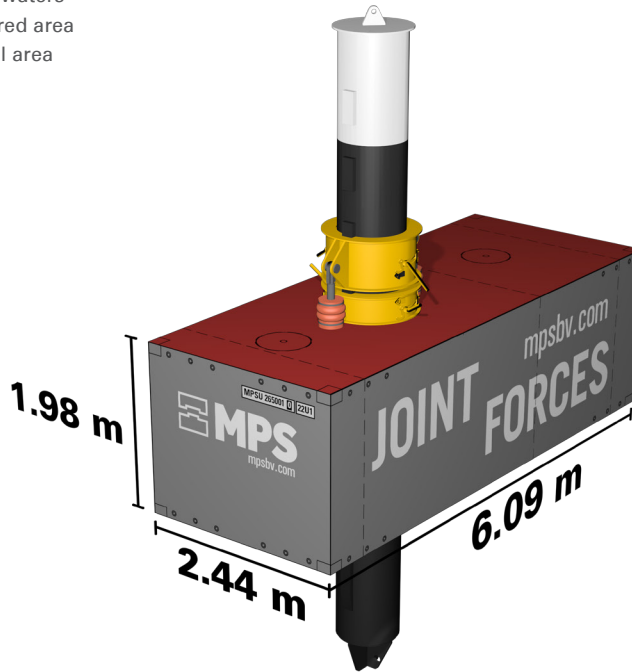
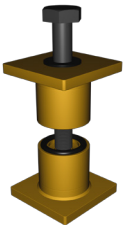
FACTSHEET - MPS - 265SP

Characteristics 20 ft x 6.5 ft container pontoon with spud casing

Length O.A.	6.09 m (20ft)
Breadth O.A.	2.44 m (8ft)
Depth	1.98 m (6.5ft)
Transport height	2.72 m
Weight	8.6 ton
Deck thickness	8 mm
Spud leg diameter	762 mm
Capacity jacking system	70 ton
Watertight bulkhead	1
Compartments	2
Manholes	2
Deckload	6.0 t/m ²
T (draught) empty	0.60 m
T (draught) Max.	1.68 m
Load cap at t Max.	15.7 ton
Class society	Bureau Veritas
Class Notation	Inland waters Sheltered area Coastal area



TEKLOCK®



TRANSPORT OPTIONS



BY ROAD



BY SEA



BY RAIL

MPSU 265001 0 22U1

CSC APPROVAL
 CERTIFICATE

CSC SAFETY APPROVAL			
APPROVAL REFERENCE			
DATE MANUFACTURED			
IDENTIFICATION No.			
MAXIMUM OPERATING GROSS MASS	kg		lbs
ALLOWABLE STACKING LOAD FOR 1.8 g	kg		lbs
TRANSVERSE RACKING TEST FORCE	newtons		
END WALL STRENGTH	NIL		lbs
SIDE WALL STRENGTH	NIL		lbs
NEXT EXAMINATION DATE			